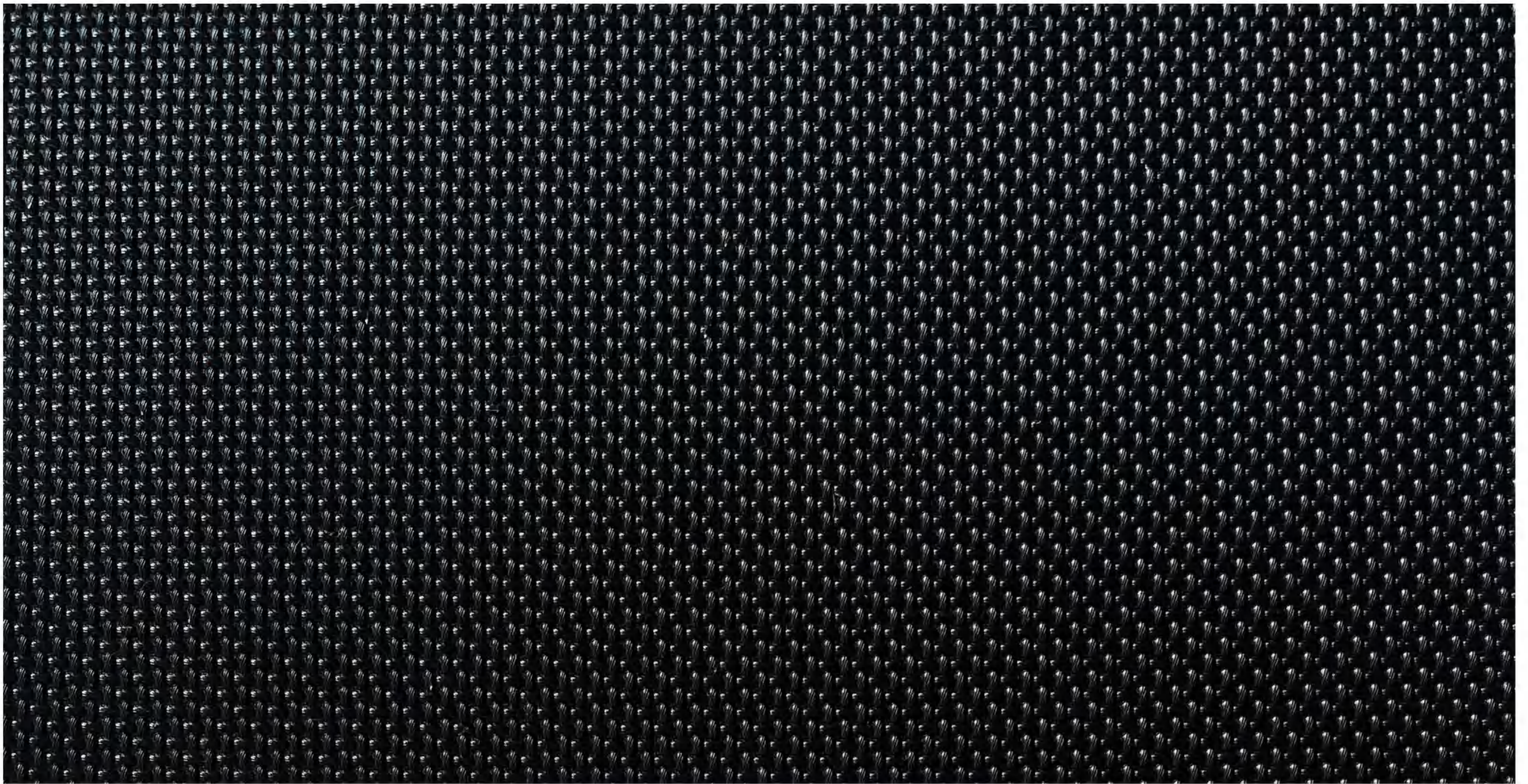
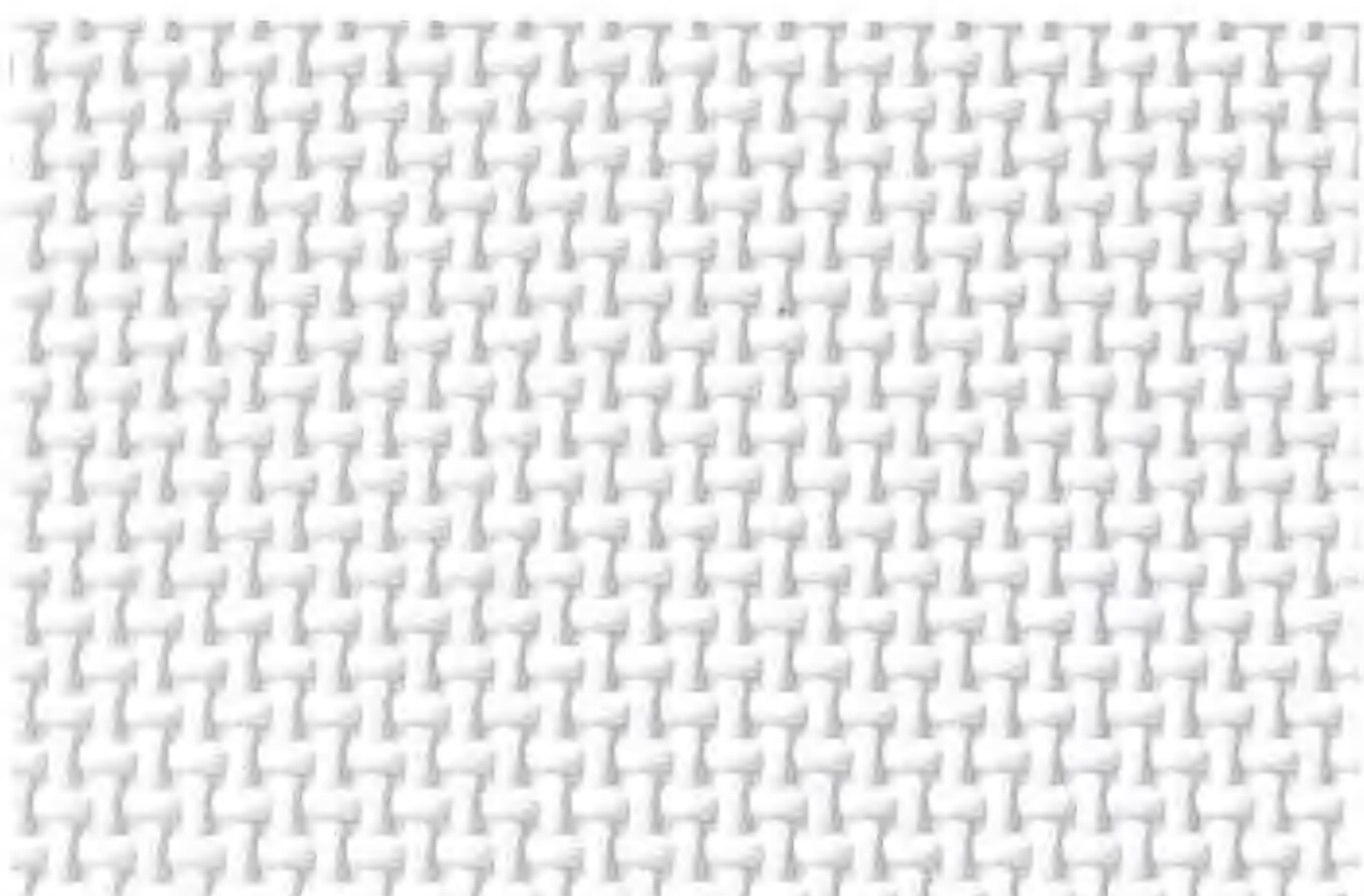


Cross Weave



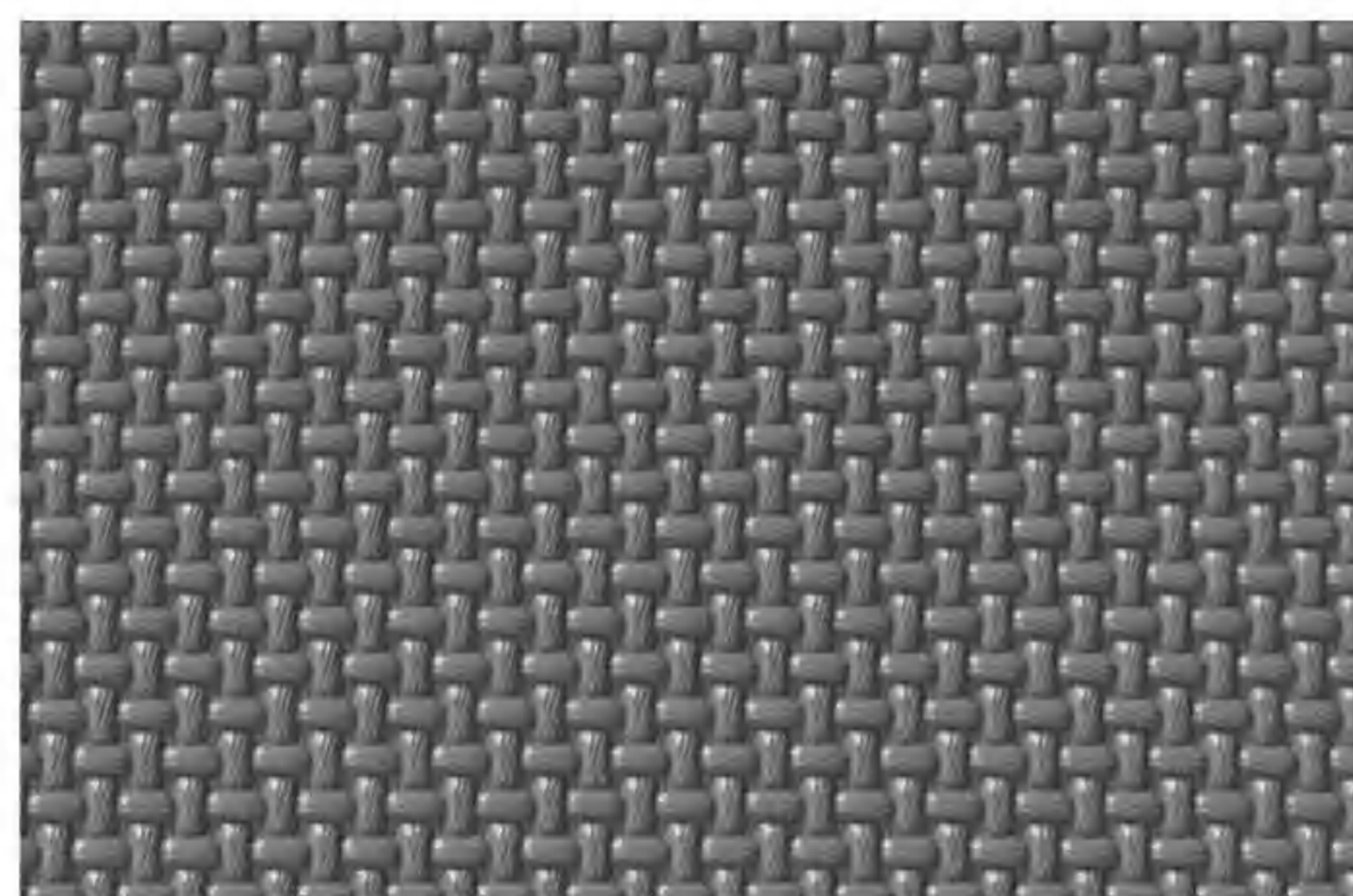
Black

CW-01



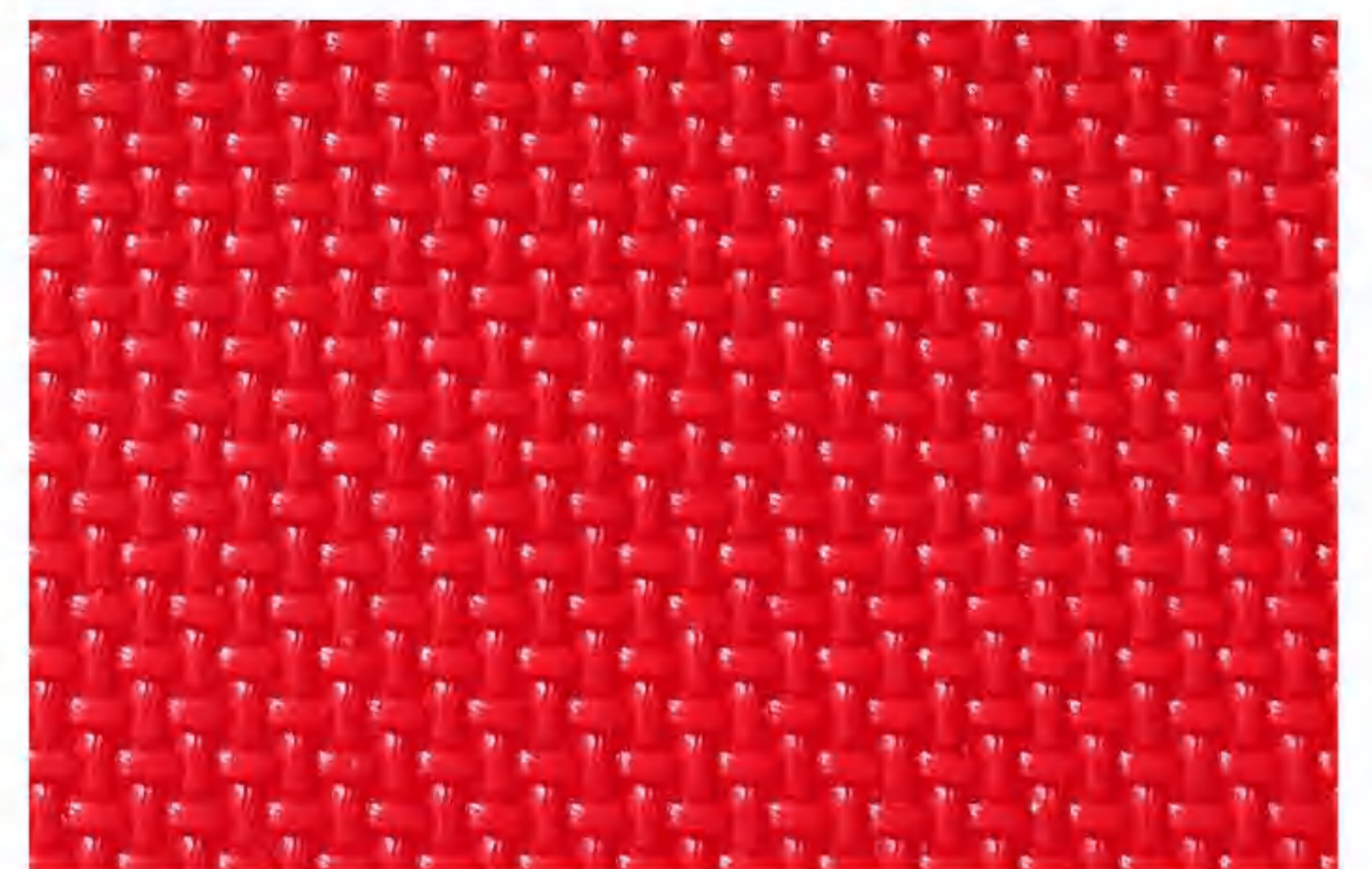
Chalk White

CW-02



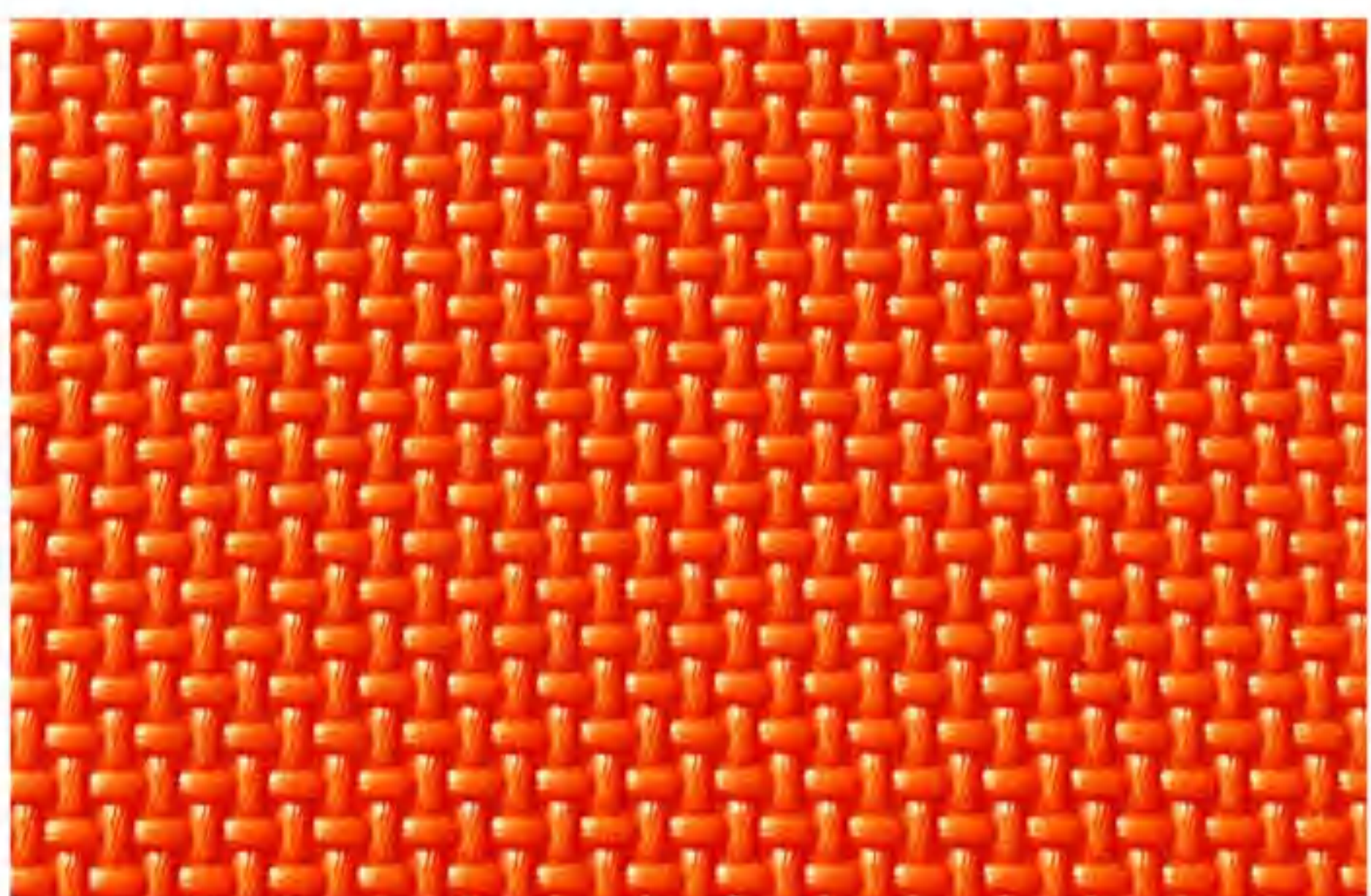
Cool Grey 9 C

CW-03



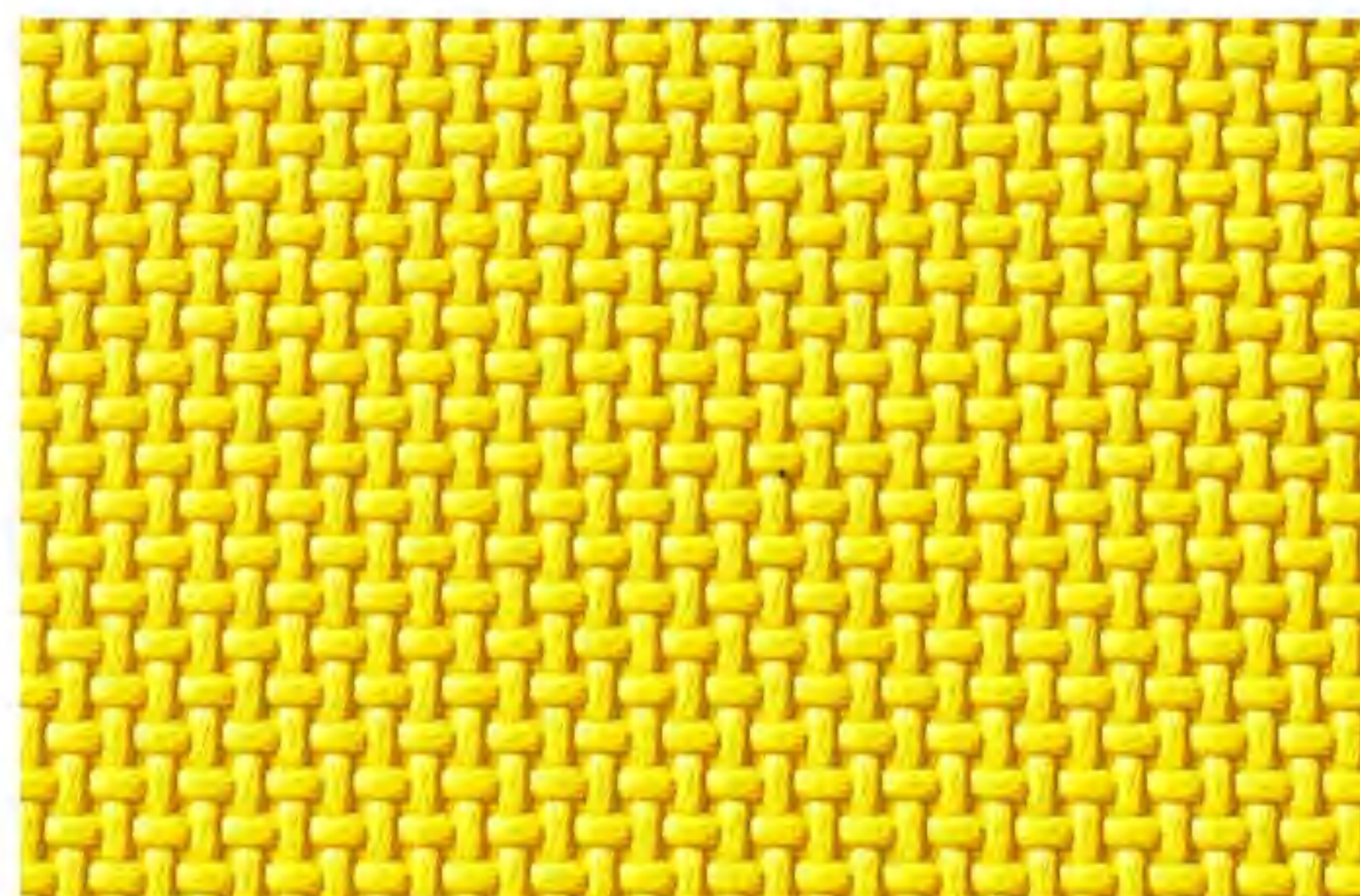
Honda Red

CW-04



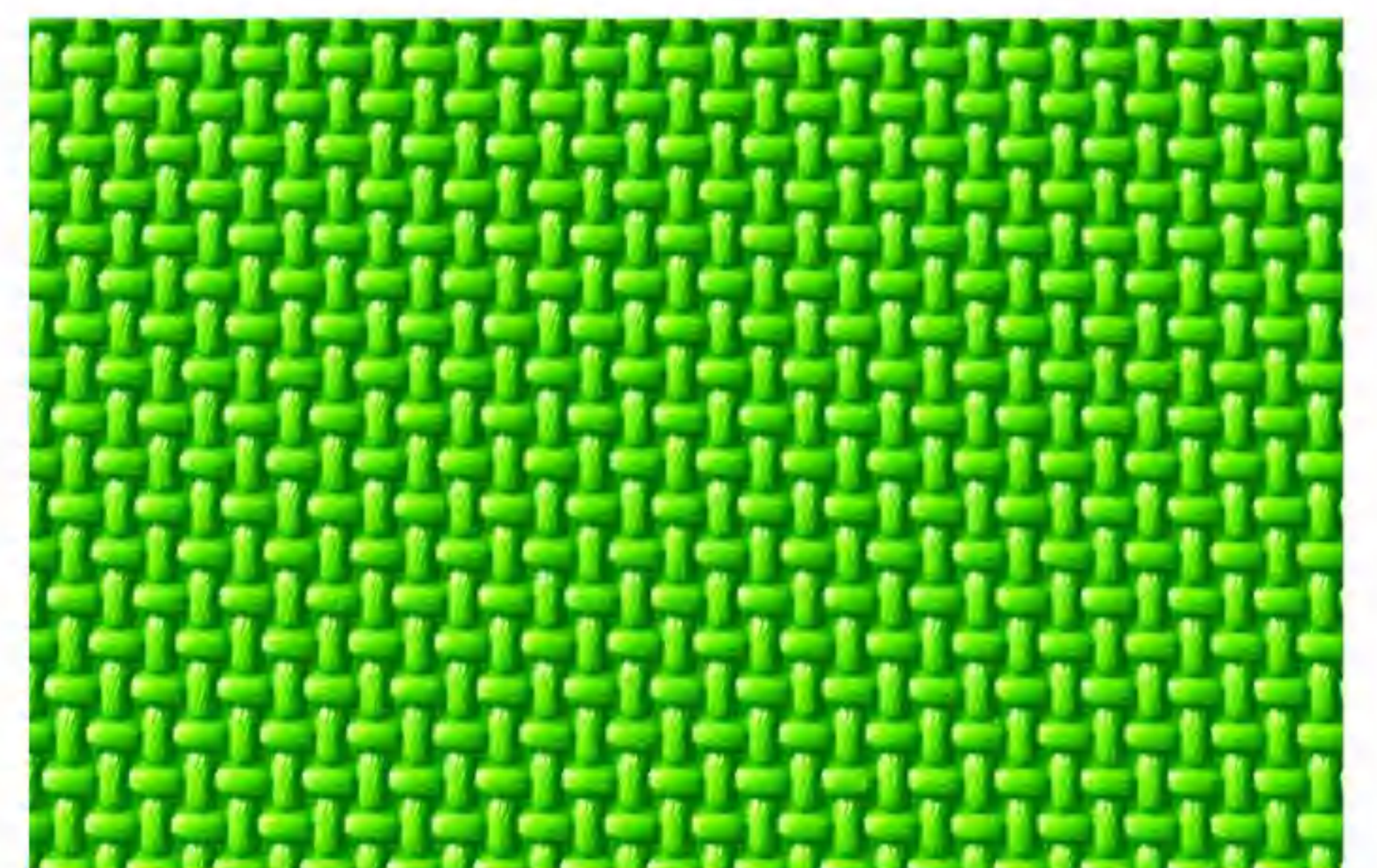
KTM Light Orange

CW-05



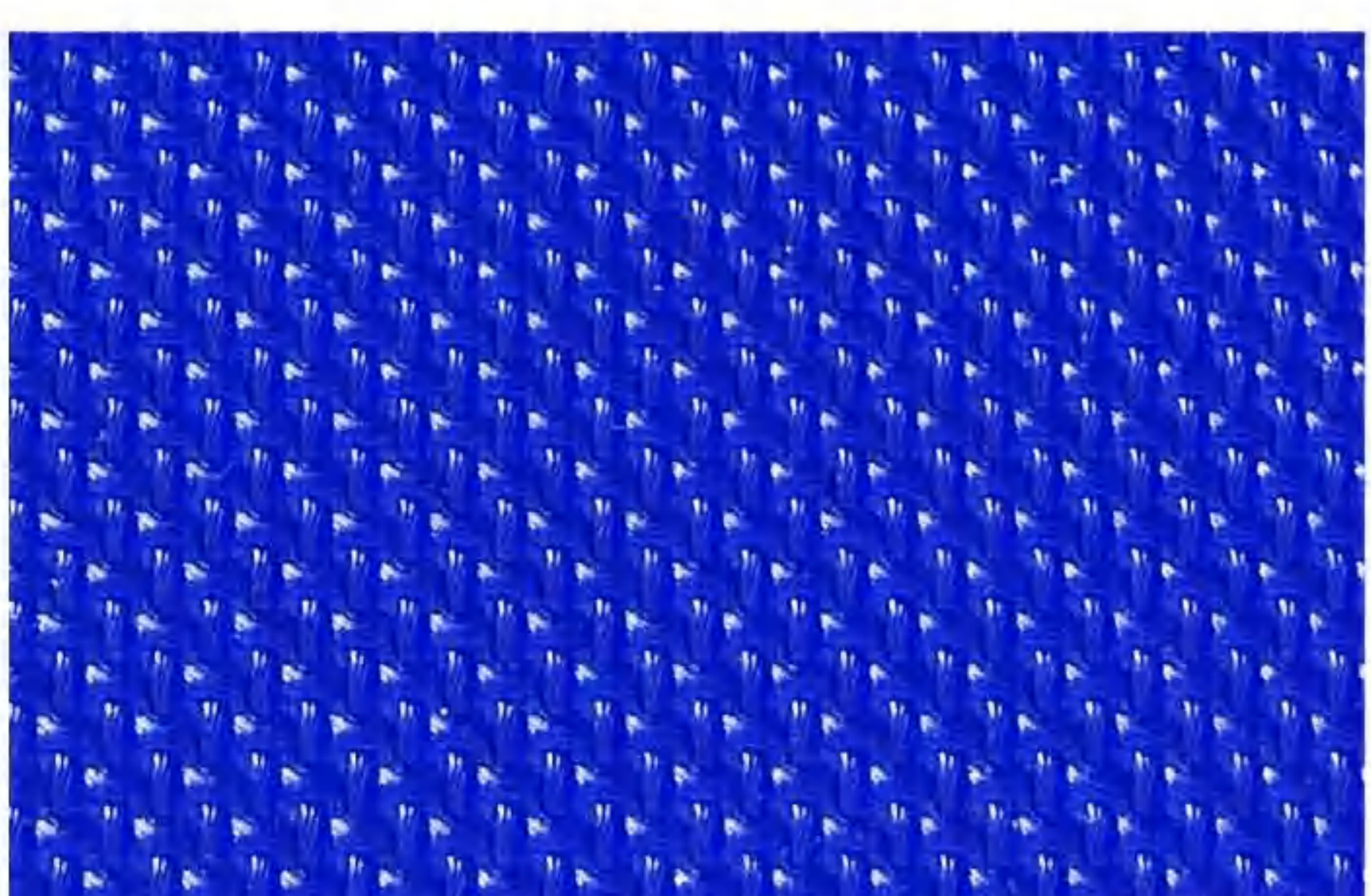
Suzuki Yellow

CW-06



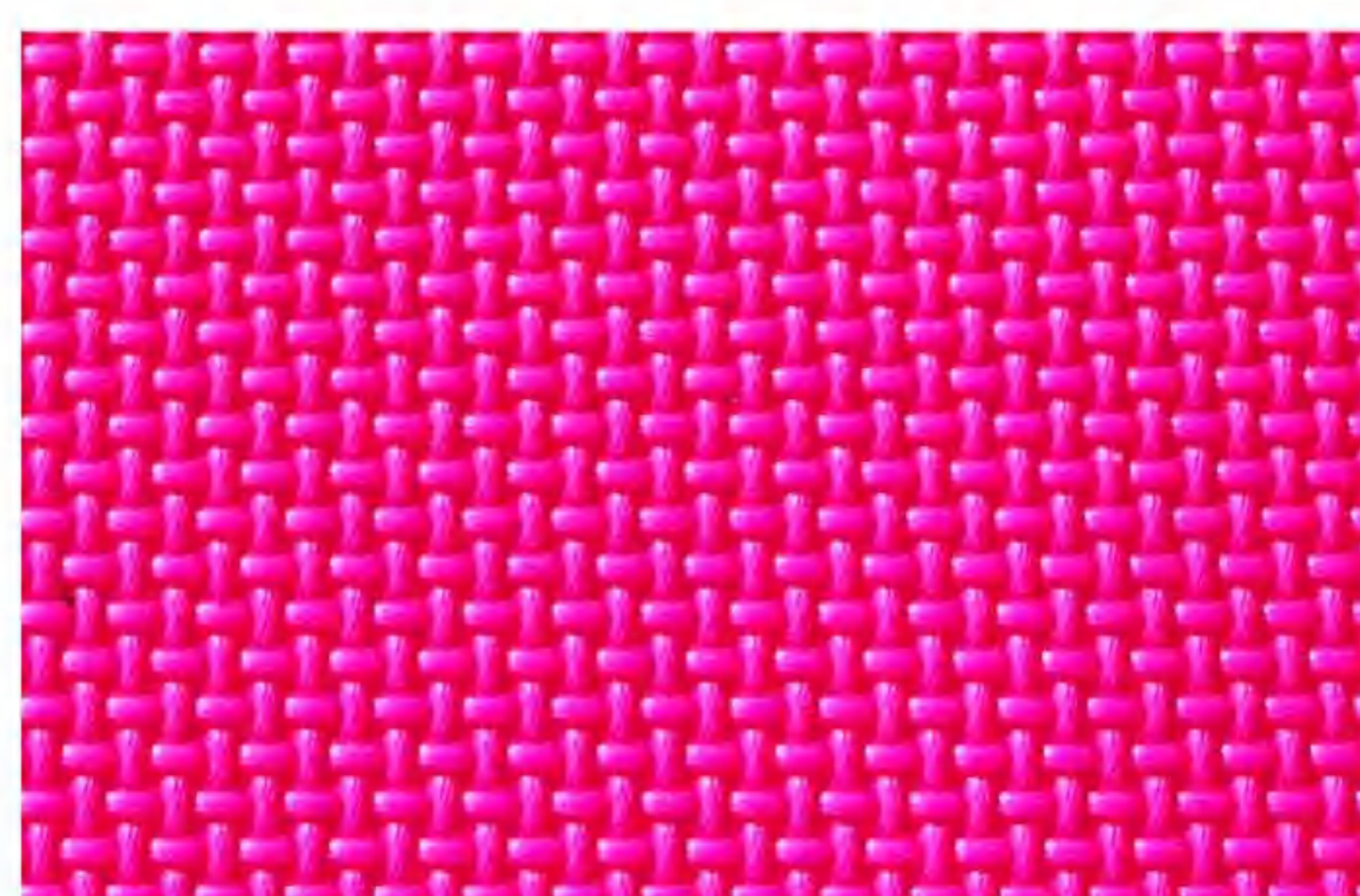
Kawasaki Green

CW-07



Yamaha Blue

CW-08



Neon Pink

CW-09



Neon Yellow

CW-10

Cross Weave

Recommended Applications



Motorcycle



Fitness

Specification

| | |
|------------------------|---|
| Content | Polyvinyl Chloride |
| Thickness | 0.8 mm |
| Width | 54" / 137cm |
| Backing | Reinforced Knitted Fabric |
| Weight | 34 oz per linear yard / 770 gsm |
| Abrasion Resistance | 150,000+ Double Rubs per ASTM D 4157-13 Wyzenbeek |
| Colorfastness to Light | 200 Hours AATCC Test Method 16-2012, Option 3 |
| Cold Crack | -10°F per Federal Standard No.191A-TM5874 |
| Anti-slip | Special Treatment |

Available In Stock

30 meters per carton for sale



Nantong Yamei Plastics Co., Ltd.
james@yameiplastics.com

